

Thank you for your purchase! At MSW® we believe having essential accessories makes a good bike ride great. The Pico Light Set is MSW's handy, USB rechargeable, small head and rear light set. Keep them mounted to your bike, or easily remove them for safe storage in a commuter backpack or bag. Be seen on your rides!

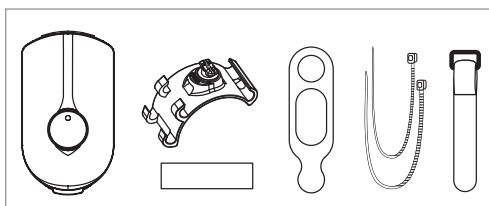
▲ WARNING: Cycling can be dangerous. Bicycle products should be installed and serviced by a professional mechanic. Never modify your bicycle or accessories. Read and follow all product instructions and warnings including information on the manufacturer's website. Inspect your bicycle before every ride. Always wear a helmet. For more information, please visit www.mswbike.com/safety.

COMPATIBILITY AND INTENDED USE

▲ WARNING: Ensure that the Pico lights are placed an adequate distance away from any rotating components of the bicycle or bicycle wheels and are not obstructed by any components, accessories, or cargo.

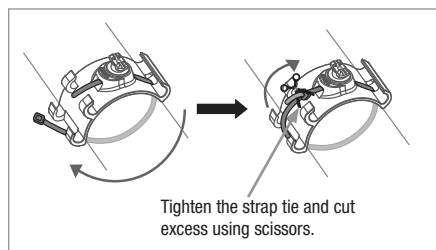
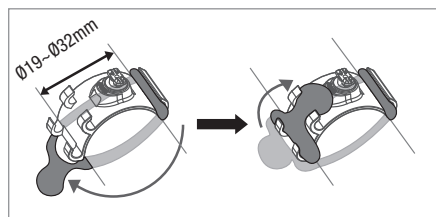
COMPONENTS - HEADLIGHT

Light
Bracket
Pad
Ring
Cable tie x 2
Hook-and-loop strap
USB cable

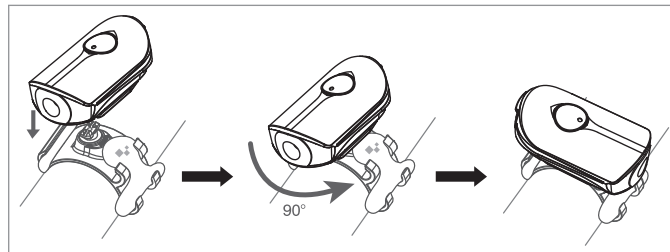


INSTALLATION

1. Install the light on the handlebar by using ring or cable tie.

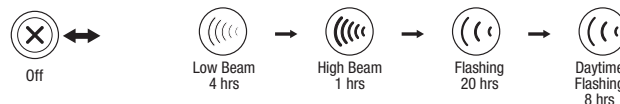
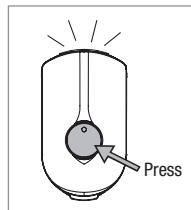


2. When the light and bracket are in vertical orientation, install the light on the bracket and twist it in the position of 90° and fasten it.



TO SWITCH MODES

Please press the button for 1.5 seconds to turn ON or OFF, and click to switch modes.



MODE MEMORY FUNCTION: When you turn the light on, it lights up in the last lighting mode you used.

NOTE: Upon full discharge, the light will enter Protected Mode and automatically restore to factory default settings. The light will be in Low Mode when charged and turned back on.

BATTERY LEVEL INDICATOR

3-level check function shows actual remaining power level:

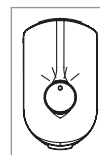
Power ON:

Green: 100–50%

Orange: 49–25%

Red: 24–0%

Power OFF: Double click to show the remaining capacity.



CHARGING

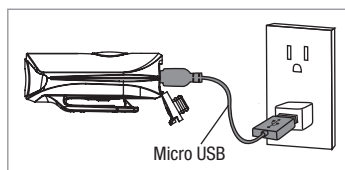
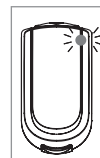
1. Please open the rubber cover at the bottom of the light.
2. Plug in provided Micro USB cable then plug into USB port.
3. Indicator will show charging status via different colors.

Red: 0–24%

Orange: 25–49%

Green: 50–100%

Light OFF: Fully Charged



SPECIFICATIONS

Size: 50 x 28 x 21.6mm

Weight: 19g

LED: 3-watt white LED, 100 lumen

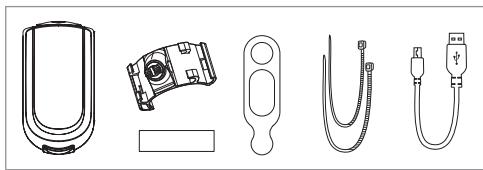
Battery: rechargeable lithium-ion polymer

Charging: DC5V/0.5A, 2H

Accessories: Micro USB cable

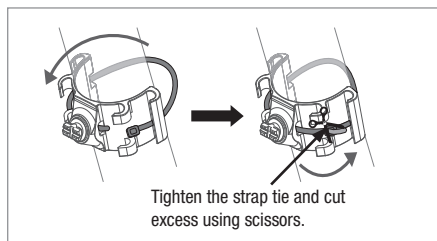
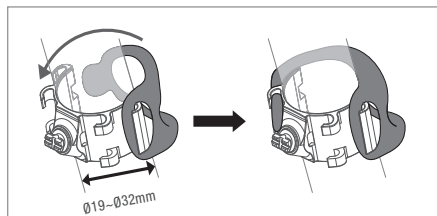
COMPONENTS - TAILLIGHT

Light
Bracket
Pad
Ring
Cable tie x 2
USB cable

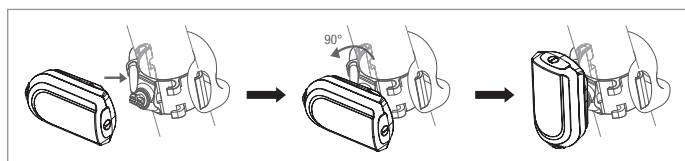


INSTALLATION

1. Install the light on the seatpost, seatstay by using ring or strap.

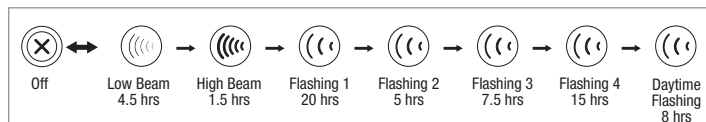
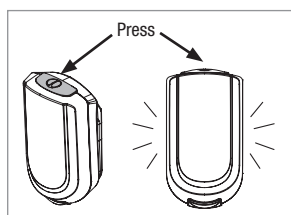


2. When the light and bracket are in vertical orientation, install the light on the bracket and twist it in the position of 90° and fasten it.



TO SWITCH MODES

Please press the button for 1.5 seconds to turn ON or OFF, and click to switch modes.



MODE MEMORY FUNCTION: When you turn the light on, it lights up in the last lighting mode you used.

NOTE: Upon full discharge, the light will enter Protected Mode and automatically restore to factory default settings. The light will be in Low Mode when charged and turned back on.

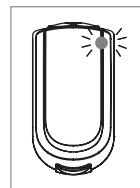
BATTERY LEVEL INDICATOR

Power OFF: Double click to show the remaining capacity.

Constant: 100–50%

Slow flash: 49–25%

Fast flash: 24–0%



LOW BATTERY ALERT

Less than 25% battery remaining

In constant mode: circular flashing

In flashing mode: pulsed constant lighting

CHARGING

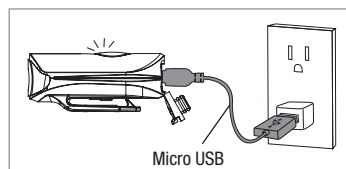
1. Please open the rubber cover at the bottom of the light.
2. Plug in provided Micro USB cable then plug into USB port.
3. Indicator will show charging status via different colors.

Red: 0–24%

Orange: 25–49%

Green: 50–100%

Light OFF: Fully Charged



SPECIFICATIONS

Size: 49.3 x 26.4 x 20mm

Weight: 18g

LED: 38 chips COB LED, 20 lumen

Battery: Rechargeable lithium-ion polymer

Charging: 5V/0.5A, 2H

Accessories: Micro USB cable

ONGOING MAINTENANCE

Periodically make sure your light is securely mounted and in working order. Inspect mounting brackets for damage.

LIMITED 2-YEAR WARRANTY

MSW warrants this new MSW product against defects in materials and workmanship for two (2) years from the original date of retail purchase by the consumer. This limited warranty is expressly limited to the repair or replacement of the original product, at the option of MSW, and is the sole remedy of the warranty. This limited warranty applies only to the original purchaser of the MSW product and is not transferable.

In no event shall MSW be liable for any loss, inconvenience or damage, whether direct, incidental or consequential or otherwise resulting from breach of any express or implied warranty or condition of merchantability, fitness for a particular purpose, or otherwise with respect to this product except as set forth herein. This warranty gives the consumer specific legal rights, and those rights and other rights may vary from state to state.

This warranty does not cover the following:

- Damage due to improper assembly or follow-up maintenance or lack of skill, competence or experience of the end user
- Products that have been modified, neglected, used in competition or for commercial purposes, misused or abused, involved in accidents or anything other than normal use
- Damage or deterioration to the surface finish, aesthetics or appearance of the product
- Normal wear and tear
- Labor required to remove and/or refit and re-adjust the product within the bicycle assembly
- Installation of components, parts, or accessories not originally intended use with or compatible with MSW products.

TO THE EXTENT NOT PROHIBITED BY LAW, THESE WARRANTIES ARE EXCLUSIVE AND THERE ARE NO OTHER EXPRESS OR IMPLIED WARRANTIES OR CONDITIONS INCLUDING WARRANTIES OR CONDITIONS OF MERCHANTABILITY AND FITNESS FOR A PARTICULAR PURPOSE.

WARRANTY PROCESS

If you and your shop think your MSW product is worthy of a warranty inspection, please return the product to the original place of purchase, accompanied by a sales receipt.

For complete warranty information, visit www.mswbike.com/safety/warranty.